

KRAKEN

REF - P. 70



DIMENSIONS

27,5 x 2.30 / 2.40

29 x 2.30 / 2.40

TERRAINS

SEC - MIXED -
ROCKY

SPECIFICATIONS



Performance



Fast rolling



Lateral grip



Mud
shedding



Puncture
resistance

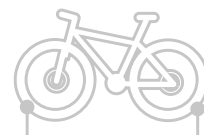


Lightness



From
700 GR

POSSIBLE COMBO



KRAKEN

KRAKEN

SKELETON

PYTHON 2

CONCEPTS

TUBETYPE

TUBELESS
READY

HARDSKIN

SIDESKIN

REINFORCED

COMPOUND



TAN
SIDEWALLS



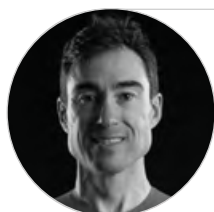
MTB

STRENGTHS

- 3 words : Versatile, grip, security • XC Performance Mounting: Kraken X Skeleton • Trail mounting: Kraken X Kraken
- Optimized knobs orientation for braking • Higher knobs than the Skeleton • A less exclusive profile • ETRTO 55-622

IN PRACTICE

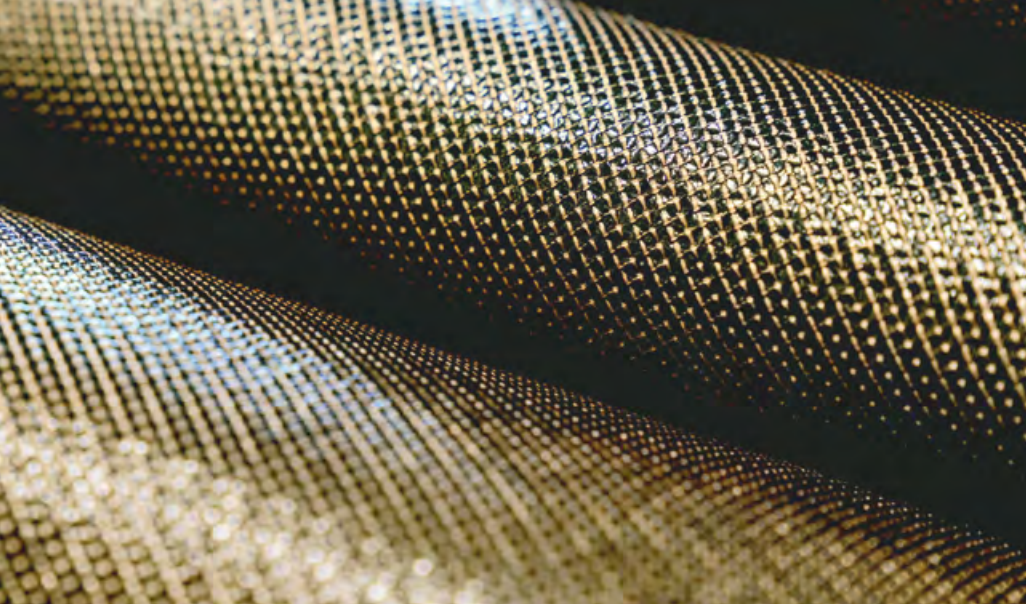
The architecture of its studs is inspired by the Skeleton, an XC tire that excels when it comes to performance. Developed in the size 29 x 2.30, the volume of the Kraken allows the pressure to be reduced to bring maximum comfort and peace of mind on the bumpiest of sections. Available in two constructions, ultra-light 127 TPI and ultra-versatile 66 TPI coupled with the Hardskin® bead-to-bead reinforcement, the Kraken Racing Lab will meet the needs of pure performance enthusiasts as well as those of XC Marathon competitors and Trail enthusiasts.



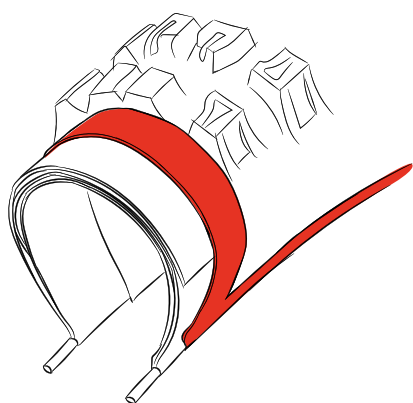
ADVICE FROM A PRO: Sergio MONTECON - SCOTT - CALA BANDIDA - MULTIPLE PODIUMS IN THE XCO WORLD CUP - MULTIPLE PODIUMS IN THE ABSA CAPE EPIC

« Hutchinson has created a tire that adapts to all types of terrain, muddy and dry. Users will have at their disposal a tire that combines great durability and excellent grip. With its 55 mm width the new Kraken is undoubtedly serious competition for the tires currently dominating the market. »

XC - TRAIL



CONCEPTS



HARDSKIN

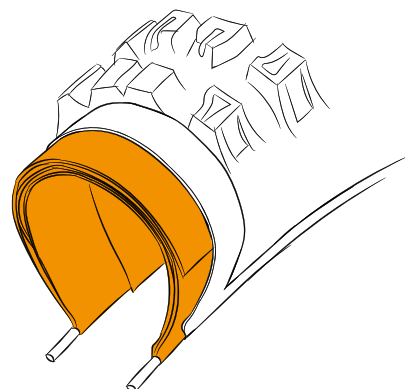
Hardskin®, Textile grid reinforcement from bead to bead on the sidewalls and under the tread. This technology is highly efficient against cuts, tears, holes and big impacts. The Hardskin® is the essential partner for all riders seeking to avoid troubles. The weight has been mastered and the association of a 66 TPI casing brings high quality dynamism and durability.

SIDESKIN

Textile grid reinforcement on the sidewalls. Used on large sections, this reinforcement reinforces the sides and improves ground contact.

REINFORCED

It is a reinforcement composed of a textile grid only under the tread.



66 TPI

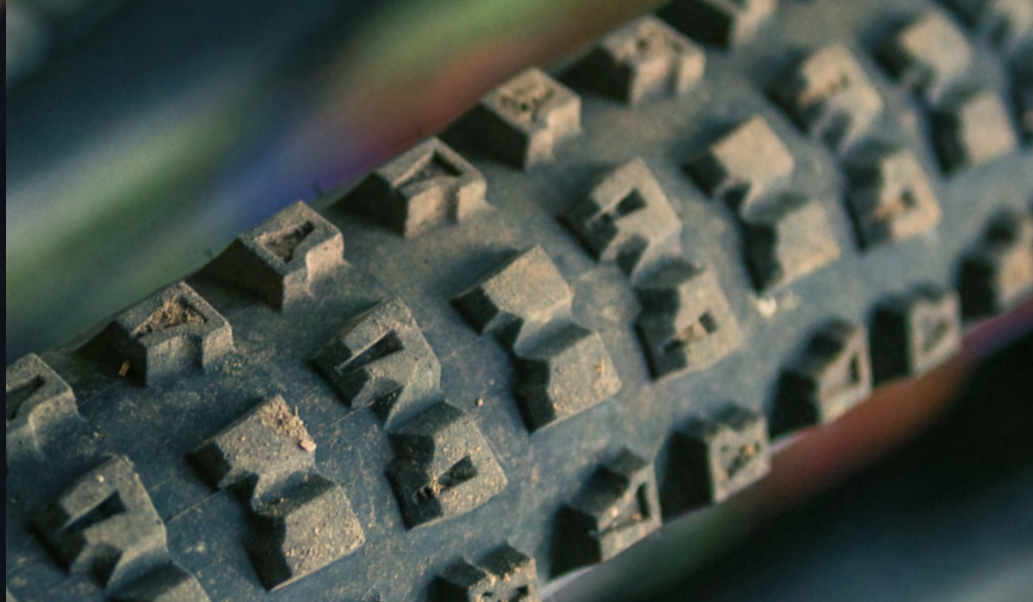
The 66 TPI casing is the perfect balance between resistance and weight, to guarantee performance from regular to intensive practice.

127 TPI

The 127 TPI casing is the greatest when looking for pure performance. Flexible, light, the associated compound layer has been reduced to allow a high rolling performance.

2X66 TPI

Double casing (2x66 TPI) reinforcing the whole tire from bead to tread. By stiffening the sidewalls, this technology also limits puncturing by impact and low pressure pinching. Compulsory for challenging practice.

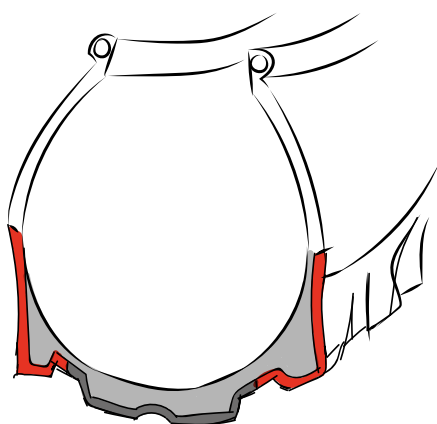


COMPOUND

MTB



RACE RIPOST®



Structure compound
65 Sha

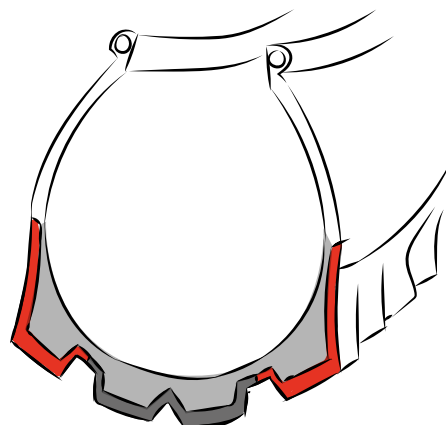
Side compound
50 Sha/Rebond 40%

Central compound
60 Sha/Rebond 50%

Race Ripost XC is dedicated to pure rolling performance. Tightly bonded to the casing, it is hard in the central part to ensure rolling, and softer and more flexible on sides to provide grip and deformation.



RACE RIPOST®



Structure compound
65 Sha

Side compound
39 Sha/Rebond 40%

Central compound
50 Sha/Rebond 50%

Race Ripost END / Gravity is dedicated to challenging practice but keeps rolling capacities.

It's thicker than the RRC XC. It is softer and it reacts slower to enhance deformation and grip. It's the perfect combination between tri-compound and Hardskin reinforcement.



| TERRAINS | SKELETON P.32 | KRAKEN P.33 | PYTHON2 P.34 | TAIPAN P.35 | GILA P.36 | TORO P.37 |
|-------------|------------------|----------------|-----------------|----------------|--------------|--------------|
| DRY TERRAIN | ● | ● | ● | | | |
| MIXED | | ● | ● | ● | ● | |
| ROCKY | | ● | | ● | ● | ● |
| WET | | | | ● | | ● |
| MUDDY | | | | ● | | ● |

MTB

| NEW | MADE IN FRANCE | PRODUCT NAME | USE | DIMENSIONS | ETRTO | TECHNOLOGY | FB / WB | REINFORCEMENT | COMPOUND | COLOR | TPI | WEIGHT (G) +/- 7% | ITEM CODE | PAGE |
|-----|----------------|---------------|----------------------|-------------|--------|----------------|---------|---------------|---------------|---------------|-----|-------------------|-----------|------|
| | FR | SKELETON RLAB | XC | 29 x 2,15 | 53-622 | Tubeless Ready | FB | Hardskin | RR XC | Black | 66 | 680 | PV529292 | 32 |
| | FR | SKELETON RLAB | XC / TRAIL | 29 x 2,30 | 55-622 | Tubeless Ready | FB | Hardskin | RR XC | Black | 66 | 690 | PV529302 | 32 |
| | | SKELETON | XC | 29 x 2,15 | 53-622 | Tubeless Ready | FB | - | Mono-compound | Black | 127 | 580 | PV702242 | 32 |
| | | KRAKEN | XC / TRAIL | 27,5 x 2,30 | 55-589 | Tubetype | WB | - | Mono-compound | Black | 33 | 1020 | PV703895 | 33 |
| | | KRAKEN | XC / TRAIL | 27,5 x 2,30 | 55-589 | Tubeless Ready | FB | Reinforced | Bi-compound | Black | 66 | 730 | PV703632 | 33 |
| NEW | | KRAKEN | TRAIL / DOWN-COUNTRY | 27,5 x 2,40 | 57-584 | Tubeless Ready | FB | Sideskin | Bi-compound | Black | 66 | N.C | PV704702 | 33 |
| | FR | KRAKEN RLAB | XC / TRAIL | 29 x 2,30 | 55-622 | Tubeless Ready | FB | - | RR XC | Black | 127 | 700 | PV529312 | 33 |
| | FR | KRAKEN RLAB | XC / TRAIL | 29 x 2,30 | 55-622 | Tubeless Ready | FB | Hardskin | RR XC | Black | 66 | 800 | PV529322 | 33 |
| | FR | KRAKEN RLAB | XC / TRAIL | 29 x 2,30 | 55-622 | Tubeless Ready | FB | Hardskin | RR XC | Tan Sidewalls | 66 | 800 | PV529332 | 33 |
| NEW | FR | KRAKEN RLAB | TRAIL / DOWN-COUNTRY | 29 x 2,40 | 57-622 | Tubeless Ready | FB | Hardskin | RR XC | Black | 66 | N.C | PV531762 | 33 |
| NEW | FR | KRAKEN RLAB | TRAIL / DOWN-COUNTRY | 29 x 2,40 | 57-622 | Tubeless Ready | FB | Hardskin | RR XC | Tan Sidewalls | 66 | N.C | PV531772 | 33 |
| NEW | | KRAKEN | TRAIL / DOWN-COUNTRY | 29 x 2,40 | 57-622 | Tubeless Ready | FB | Sideskin | Bi-compound | Black | 66 | N.C | PV704692 | 33 |
| | | KRAKEN | XC / TRAIL | 29 x 2,30 | 55-622 | Tubetype | WB | - | Mono-compound | Black | 33 | 1060 | PV703805 | 33 |
| | | KRAKEN | XC / TRAIL | 29 x 2,30 | 55-622 | Tubeless Ready | FB | Sideskin | Bi-compound | Black | 66 | 800 | PV703002 | 33 |

MTB

| NEW | MADE IN FRANCE | PRODUCT NAME | USE | DIMENSIONS | ETRTO | TECHNOLOGY | FB / WB | REINFORCEMENT | COMPOUND | COLOR | TPI | WEIGHT (G) +/- 7% | ITEM CODE | PAGE |
|-----|----------------|--------------|------------|-------------|--------|----------------|---------|---------------|---------------|-------|-----|-------------------|-----------|------|
| | | PYTHON 2 | XC / TRAIL | 26 x 2,25 | 54-559 | Tubeless Ready | FB | Sideskin | Bi-compound | Black | 66 | 700 | PV704112 | 34 |
| NEW | | PYTHON 2 | XC | 26 x 2,10 | 52-559 | Tubetype | FB | Sideskin | Mono-compound | Black | 66 | 750 | PV704342 | 34 |
| | | PYTHON 2 | XC | 26 x 2,10 | 52-559 | Tubetype | WB | - | Mono-compound | Black | 33 | 695 | PV700865 | 34 |
| | FR | PYTHON 2 | XC | 26 x 2,10 | 52-559 | Tubeless Ready | FB | - | RR XC | Black | 127 | 660 | PV525182 | 34 |
| | | PYTHON 2 | XC / TRAIL | 26 x 2,25 | 54-559 | Tubetype | WB | - | Mono-compound | Black | 33 | 680 | PV700885 | 34 |
| | | PYTHON 2 | XC / TRAIL | 26 x 2,25 | 54-559 | Tubetype | FB | Hardskin | Mono-compound | Black | 66 | 610 | PV700892 | 34 |
| | | PYTHON 2 | XC | 27.5 x 2,10 | 52-584 | Tubetype | WB | - | Mono-compound | Black | 33 | 720 | PV701285 | 34 |
| | | PYTHON 2 | XC | 27.5 x 2,10 | 52-584 | Tubetype | FB | Hardskin | Mono-compound | Black | 66 | 690 | PV700912 | 34 |
| | | PYTHON 2 | XC / TRAIL | 27.5 x 2,30 | 55-584 | Tubeless Ready | FB | Sideskin | Bi-compound | Black | 66 | 750 | PV704102 | 34 |
| | FR | PYTHON 2 | XC / TRAIL | 27.5 x 2,25 | 54-584 | Tubeless Ready | FB | Hardskin | RR XC | Black | 66 | 815 | PV526362 | 34 |
| | | PYTHON 2 | XC | 29 x 2,10 | 52-622 | Tubetype | WB | - | Mono-compound | Black | 33 | 770 | PV700945 | 34 |
| | | PYTHON 2 | XC | 29 x 2,10 | 52-622 | Tubetype | FB | Hardskin | Mono-compound | Black | 66 | 740 | PV700952 | 34 |
| | FR | PYTHON 2 | XC | 29 x 2,10 | 52-622 | Tubeless Ready | FB | Hardskin | RR XC | Black | 66 | 830 | PV525222 | 34 |
| | FR | PYTHON 2 | XC / TRAIL | 29 x 2,25 | 54-622 | Tubeless Ready | FB | - | RR XC | Black | 127 | 760 | PV525352 | 34 |
| | | PYTHON 2 | XC / TRAIL | 29 x 2,30 | 55-622 | Tubeless Ready | FB | Sideskin | Bi-compound | Black | 66 | 780 | PV704192 | 34 |
| NEW | | PYTHON 2 | XC / TRAIL | 29 x 2,30 | 55-622 | Tubetype | FB | Sideskin | Mono-compound | Black | 66 | 835 | PV704362 | 34 |
| NEW | | PYTHON 2 | XC / TRAIL | 29 x 2,30 | 55-622 | Tubetype | WB | - | Mono-compound | Black | 33 | 900 | PV704355 | 34 |
| | FR | PYTHON 2 | XC / TRAIL | 29 x 2,25 | 54-622 | Tubeless Ready | FB | Hardskin | RR XC | Black | 66 | 860 | PV526372 | 34 |
| | | TAIPAN | XC | 26 x 2,10 | 52-559 | Tubeless Ready | FB | - | Mono-compound | Black | 127 | 600 | PV702702 | 35 |
| | | TAIPAN | XC | 27.5 x 2,10 | 52-584 | Tubetype | FB | Hardskin | Mono-compound | Black | 66 | 690 | PV701022 | 35 |
| | | TAIPAN | XC | 27.5 x 2,10 | 52-584 | Tubeless Ready | FB | - | Mono-compound | Black | 127 | 620 | PV702712 | 35 |
| | | TAIPAN | XC / TRAIL | 27.5 x 2,25 | 54-584 | Tubetype | WB | - | Mono-compound | Black | 33 | 710 | PV701035 | 35 |
| NEW | | TAIPAN | XC / TRAIL | 27.5 x 2,30 | 55-622 | Tubeless Ready | FB | Sideskin | Bi-compound | Black | 66 | 760 | PV704032 | 35 |

MTB

| NEW | MADE IN FRANCE | PRODUCT NAME | USE | DIMENSIONS | ETRTO | TECHNOLOGY | FB / WB | REINFORCEMENT | COMPOUND | COLOR | TPI | WEIGHT (G) +/-7% | ITEM CODE | PAGE |
|-----|----------------|--------------|----------------------|-------------|--------|----------------|---------|---------------|---------------|-------|-----|------------------|-----------|------|
| | | TAIPAN | XC | 29 x 2,10 | 52-622 | Tubeless Ready | FB | Hardskin | Mono-compound | Black | 66 | 740 | PV701062 | 35 |
| | FR | TAIPAN | XC | 29 x 2,10 | 52-622 | Tubeless Ready | FB | - | RR XC | Black | 127 | 608 | PV524882 | 35 |
| | FR | TAIPAN | XC | 29 x 2,10 | 52-622 | Tubeless Ready | FB | Hardskin | RR XC | Black | 66 | 697 | PV524892 | 35 |
| | | TAIPAN | XC | 29 x 2,10 | 52-622 | Tubeless Ready | FB | - | Mono-compound | Black | 127 | 715 | PV702722 | 35 |
| | FR | TAIPAN | XC / TRAIL | 29 x 2,25 | 54-622 | Tubeless Ready | FB | - | RR XC | Black | 127 | 685 | PV525432 | 35 |
| | FR | TAIPAN | XC / TRAIL | 29 x 2,25 | 54-622 | Tubeless Ready | FB | Hardskin | RR XC | Black | 66 | 770 | PV526532 | 35 |
| NEW | | TAIPAN | XC / TRAIL | 29 x 2,30 | 55-622 | Tubeless Ready | FB | Sideskin | Bi-compound | Black | 66 | 830 | PV704022 | 35 |
| | FR | TAIPAN | ENDURO | 29 x 2,35 | 57-622 | Tubeless Ready | FB | Hardskin | RR Gravity | Black | 66 | 870 | PV526452 | 43 |
| NEW | | TAIPAN | TRAIL / DOWN-COUNTRY | 29 x 2,40 | 57-622 | Tubeless Ready | FB | Sideskin | Bi-compound | Black | 66 | 880 | PV704002 | 35 |
| | | TORO | Recreational | 24 x 2,00 | 50-507 | Tubeless Ready | WB | Hardskin | Mono-compound | Black | 33 | 560 | PV702695 | 37 |
| | | TORO | XC | 26 x 2,15 | 51-559 | Tubeless Ready | WB | - | Mono-compound | Black | 66 | 625 | PV697925 | 37 |
| | | TORO | XC | 26 x 2,15 | 51-559 | Tubeless Ready | FB | Hardskin | Mono-compound | Black | 66 | 620 | PV701092 | 37 |
| | | TORO | XC / TRAIL | 26 x 2,25 | 54-559 | Tubeless Ready | FB | - | Mono-compound | Black | 66 | 655 | PV700722 | 37 |
| | | TORO | XC | 27.5 x 2,10 | 52-584 | Tubeless Ready | WB | - | Mono-compound | Black | 33 | 740 | PV701145 | 37 |
| | | TORO | XC | 27.5 x 2,10 | 52-584 | Tubeless Ready | FB | Hardskin | Mono-compound | Black | 66 | 710 | PV701152 | 37 |
| | | TORO | XC / TRAIL | 27.5 x 2,25 | 54-584 | Tubeless Ready | FB | - | Mono-compound | Black | 66 | 700 | PV700762 | 37 |
| | | TORO | XC / TRAIL | 27.5 x 2,25 | 54-584 | Tubeless Ready | FB | - | Mono-compound | Black | 127 | 805 | PV702842 | 37 |
| | | TORO | ENDURO | 27.5 x 2,35 | 57-584 | Tubeless Ready | FB | - | Mono-compound | Black | 127 | 950 | PV702862 | 42 |
| | FR | TORO | XC | 29 x 2,10 | 52-622 | Tubeless Ready | FB | - | RR XC | Black | 127 | 680 | PV526182 | 37 |
| | FR | TORO | XC | 29 x 2,10 | 52-622 | Tubeless Ready | FB | Hardskin | RR XC | Black | 66 | 705 | PV526192 | 37 |
| | | TORO | XC | 29 x 2,10 | 52-622 | Tubeless Ready | WB | - | Mono-compound | Black | 33 | 770 | PV700025 | 37 |
| | FR | TORO | XC / TRAIL | 29 x 2,25 | 54-622 | Tubeless Ready | FB | Hardskin | RR XC | Black | 66 | 900 | PV526502 | 37 |
| | | TORO | XC / TRAIL | 29 x 2,30 | 55-622 | Tubeless Ready | FB | Sideskin | Bi-compound | Black | 66 | 800 | PV704042 | 37 |
| | FR | TORO | ENDURO / E-BIKE | 29 x 2,35 | 57-622 | Tubeless Ready | FB | Hardskin | RR Gravity | Black | 66 | 1000 | PV528542 | 42 |
| | | TORO | TRAIL / DOWN-COUNTRY | 29 x 2,40 | 57-622 | Tubeless Ready | FB | Sideskin | Bi-compound | Black | 66 | 990 | PV704012 | 37 |
| | | GLA | XC | 26 x 2,10 | 52-559 | Tubeless Ready | FB | - | Mono-compound | Black | 127 | 620 | PV701322 | 36 |

MTB

| NEW | MADE IN FRANCE | PRODUCT NAME | USE | DIMENSIONS | ETRTO | TECHNOLOGY | FB / WB | REINFORCEMENT | COMPOUND | COLOR | TPI | WEIGHT (G) +/- 7% | ITEM CODE | PAGE |
|-----|----------------|-------------------|----------------------|-------------|--------|----------------|---------|---------------|---------------|-------|------|-------------------|-----------|------|
| | | GILA | XC | 27.5 x 2,10 | 52-584 | Tubeless Ready | FB | - | Mono-compound | Black | 127 | 715 | PV701782 | 36 |
| | | GILA | XC / TRAIL | 27.5 x 2,25 | 54-584 | Tubeless Ready | FB | - | Mono-compound | Black | 127 | 770 | PV701342 | 36 |
| NEW | | GILA | XC / TRAIL | 27,5 x 2,30 | 55-584 | Tubeless Ready | FB | Sideskin | Bi-compound | Black | 66 | N.C | PV704732 | 36 |
| | | GILA | XC | 29 x 2,10 | 52-622 | Tubeless Ready | FB | - | Mono-compound | Black | 127 | 660 | PV701352 | 36 |
| | | GILA | XC / TRAIL | 29 x 2,25 | 54-622 | Tubeless Ready | FB | - | Mono-compound | Black | 127 | 690 | PV701792 | 36 |
| NEW | | GILA | TRAIL / DOWN-COUNTRY | 29 x 2,40 | 57-622 | Tubeless Ready | FB | Sideskin | Bi-compound | Black | 66 | N.C | PV704712 | 36 |
| NEW | | GILA | XC / TRAIL | 29 x 2,30 | 55-622 | Tubeless Ready | FB | Sideskin | Bi-compound | Black | 66 | N.C | PV704722 | 36 |
| | | GRIFFUS | ENDURO / E-BIKE | 27.5 x 2,40 | 57-584 | Tubetype | WB | - | Mono-compound | Black | 33 | 1160 | PV702635 | 40 |
| | | GRIFFUS | ENDURO / E-BIKE | 27.5 x 2,50 | 58-584 | Tubetype | WB | - | Mono-compound | Black | 33 | 1200 | PV702655 | 41 |
| | | GRIFFUS | ENDURO / E-BIKE | 27.5 x 2,40 | 57-584 | Tubeless Ready | FB | Sideskin | Bi-compound | Black | 66 | 920 | PV702642 | 40 |
| | | GRIFFUS | ENDURO / E-BIKE | 27.5 x 2,50 | 58-584 | Tubeless Ready | FB | Sideskin | Bi-compound | Black | 66 | 980 | PV702662 | 41 |
| | FR | GRIFFUS RLAB | ENDURO / E-BIKE | 27.5 x 2,40 | 57-584 | Tubeless Ready | FB | Hardskin | RR Gravity | Black | 66 | 930 | PV528742 | 40 |
| | FR | GRIFFUS RLAB | ENDURO / E-BIKE | 27.5 x 2,50 | 58-584 | Tubeless Ready | FB | Hardskin | RR Gravity | Black | 66 | 980 | PV528752 | 41 |
| | FR | GRIFFUS RLAB | ENDURO / E-BIKE | 27.5 x 2,40 | 57-584 | Tubeless Ready | FB | Hardskin | RR Gravity | Tan | 66 | 930 | PV529112 | 40 |
| | FR | GRIFFUS RLAB | ENDURO / E-BIKE | 27.5 x 2,50 | 58-584 | Tubeless Ready | FB | Hardskin | RR Gravity | Tan | 66 | 980 | PV529122 | 41 |
| NEW | | GRIFFUS | ENDURO / E-BIKE | 29 x 2,40 | 57-622 | Tubetype | WB | - | Mono-compound | Black | 33 | N.C | PV704675 | 40 |
| NEW | | GRIFFUS | ENDURO / E-BIKE | 29 x 2,50 | 58-622 | Tubetype | WB | - | Mono-compound | Black | 33 | N.C | PV704685 | 41 |
| | | GRIFFUS | ENDURO / E-BIKE | 29 x 2,40 | 57-622 | Tubeless Ready | FB | Sideskin | Bi-compound | Black | 66 | 1020 | PV702672 | 40 |
| | | GRIFFUS | ENDURO / E-BIKE | 29 x 2,50 | 58-622 | Tubeless Ready | FB | Sideskin | Bi-compound | Black | 66 | 1120 | PV702682 | 41 |
| | FR | GRIFFUS RLAB | ENDURO / E-BIKE | 29 x 2,40 | 57-622 | Tubeless Ready | FB | Hardskin | RR Gravity | Black | 66 | 1030 | PV528732 | 40 |
| | FR | GRIFFUS RLAB | ENDURO / E-BIKE | 29 x 2,40 | 57-622 | Tubeless Ready | FB | Hardskin | RR Gravity | Tan | 66 | 1030 | PV529692 | 40 |
| | FR | GRIFFUS RLAB | ENDURO / E-BIKE | 29 x 2,50 | 58-622 | Tubeless Ready | FB | Hardskin | RR Gravity | Black | 66 | 1100 | PV528722 | 41 |
| | FR | GRIFFUS RLAB | ENDURO / E-BIKE | 29 x 2,50 | 58-622 | Tubeless Ready | FB | Hardskin | RR Gravity | Tan | 66 | 1100 | PV529702 | 41 |
| | FR | GRIFFUS RLAB 2x66 | ENDURO / E-BIKE | 27.5 x 2,40 | 57-584 | Tubeless Ready | FB | - | RR Gravity | Noir | 2x66 | 1030 | PV529812 | 40 |
| | FR | GRIFFUS RLAB 2x66 | ENDURO / E-BIKE | 27.5 x 2,50 | 58-584 | Tubeless Ready | FB | - | RR Gravity | Noir | 2x66 | 1080 | PV529792 | 41 |
| | FR | GRIFFUS RLAB 2x66 | ENDURO / E-BIKE | 29 x 2,40 | 57-622 | Tubeless Ready | FB | - | RR Gravity | Noir | 2x66 | 1130 | PV529822 | 40 |
| | FR | GRIFFUS RLAB 2x66 | ENDURO / E-BIKE | 29 x 2,50 | 58-622 | Tubeless Ready | FB | - | RR Gravity | Noir | 2x66 | 1180 | PV529802 | 41 |