

GRIFFUS 2.4



REF - P. 73

DIMENSIONS

27.5 X 2.40
29 X 2.40

TERRAINS

SEC - MIXED -
ROCKY

SPECIFICATIONS

- Performance
- Fast rolling
- Lateral grip
- Mud shedding
- Puncture resistance
- Lightness

POSSIBLE COMBO



GRIFFUS 2.5 GRIFFUS 2.4

CONCEPTS

- TUBETYPE
- TUBELESS READY
- HARDSKIN
- SIDESKIN
- 2x66

COMPOUND



TAN SIDEWALLS



MTB

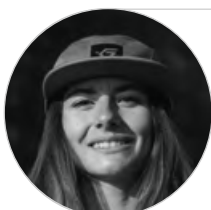


STRENGTHS

- Versatile profile • Reduced height knobs compared to the 2.50 profile for high performance • Central knobs are orientated for faster rolling performance • A tri-compound Race Ripost Gravity • construction that precisely controls • tread deformation and increases grip • A 66 TPI casing in addition with Hardskin protection will give you the ability to handle the most difficult terrain

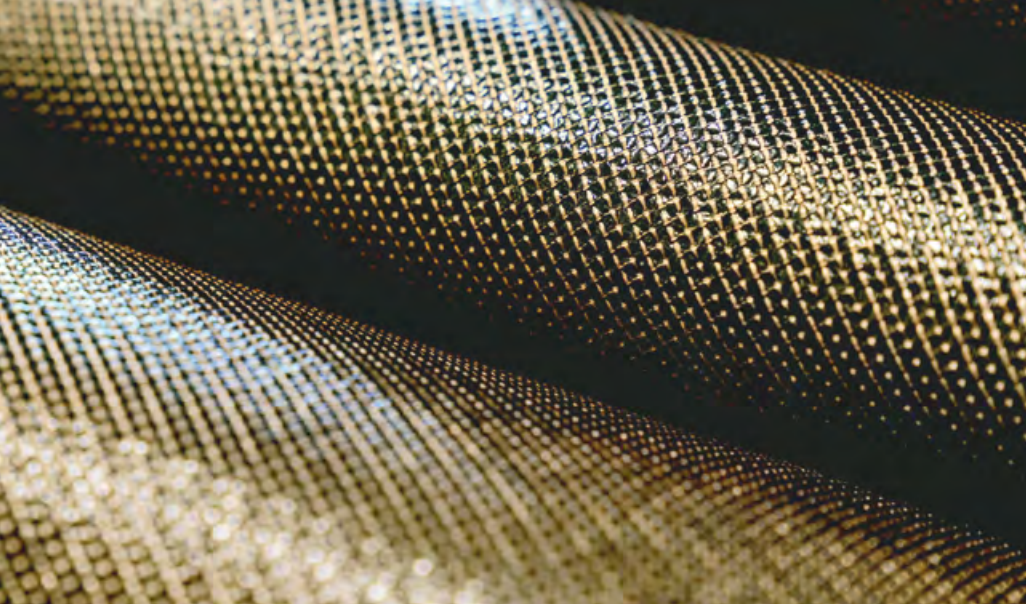
IN PRACTICE

The Griffus 2.40 is the faster rolling version, its central tread offering the right compromise between efficiency and braking. With a 57 mm cross section and a faster central tread it can be used as a rear tyre for riders seeking to save precious seconds in competition. The Griffus 2.40 is also a versatile tyre and can also be used for All Mountain riding as a front and rear option.

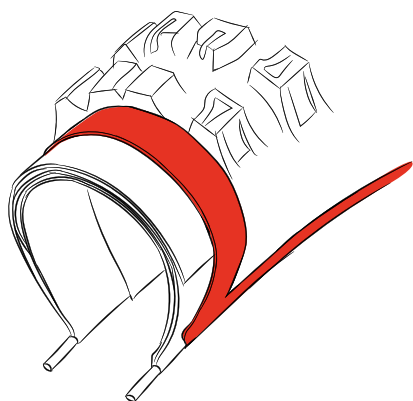


ADVICE FROM A PRO: Isabeau COURDURIER - TEAM LAPIERRE ZIPP COLLECTIVE - ENDURO WORLD SERIES 2022 WORLD CHAMPION - FRANCE VTT ENDURO 2022 CHAMPION

« I'm really rigorous about tires, i need feel confident and be sure not to suffer punctures, without being too heavy, with fast rolling performance, while keeping a significant grip. With the Griffus, i have the perfect compromise between grip and performance. I will use it on 80% of the race. When I'm searching for precision in my rides, I'm used to mount Griffus 2.4 both front and rear »



CONCEPTS



HARDSKIN

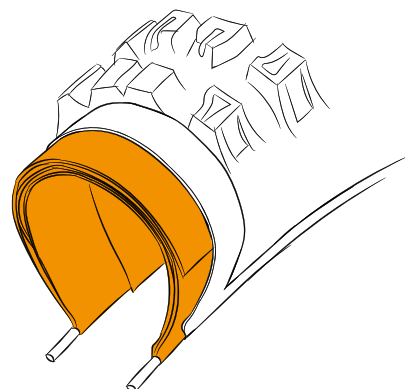
Hardskin®, Textile grid reinforcement from bead to bead on the sidewalls and under the tread. This technology is highly efficient against cuts, tears, holes and big impacts. The Hardskin® is the essential partner for all riders seeking to avoid troubles. The weight has been mastered and the association of a 66 TPI casing brings high quality dynamism and durability.

SIDESKIN

Textile grid reinforcement on the sidewalls. Used on large sections, this reinforcement reinforces the sides and improves ground contact.

REINFORCED

It is a reinforcement composed of a textile grid only under the tread.



66 TPI

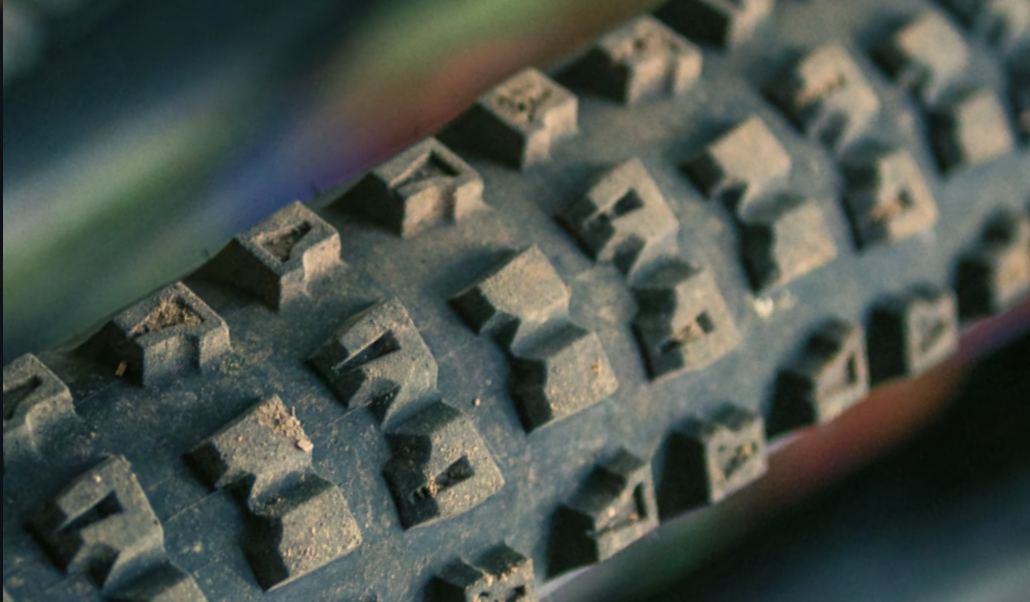
The 66 TPI casing is the perfect balance between resistance and weight, to guarantee performance from regular to intensive practice.

127 TPI

The 127 TPI casing is the greatest when looking for pure performance. Flexible, light, the associated compound layer has been reduced to allow a high rolling performance.

2X66 TPI

Double casing (2x66 TPI) reinforcing the whole tire from bead to tread. By stiffening the sidewalls, this technology also limits puncturing by impact and low pressure pinching. Compulsory for challenging practice.

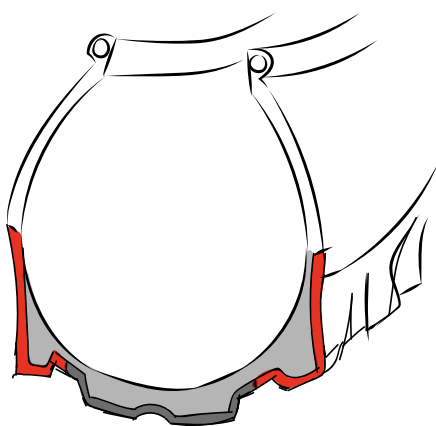


COMPOUND

MTB



RACE RIPOST®



Structure compound
65 Sha

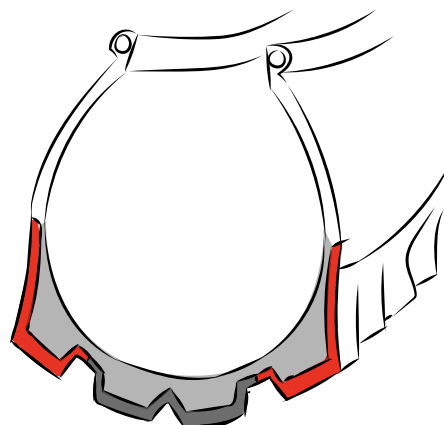
Side compound
50 Sha/Rebond 40%

Central compound
60 Sha/Rebond 50%

Race Ripost XC is dedicated to pure rolling performance. Tightly bonded to the casing, it is hard in the central part to ensure rolling, and softer and more flexible on sides to provide grip and deformation.



RACE RIPOST®



Structure compound
65 Sha

Side compound
39 Sha/Rebond 40%

Central compound
50 Sha/Rebond 50%

Race Ripost END / Gravity is dedicated to challenging practice but keeps rolling capacities.

It's thicker than the RRC XC. It is softer and it reacts slower to enhance deformation and grip. It's the perfect combination between tri-compound and Hardskin reinforcement.

MTB GRAVITY



GRIFFUS 2.4
P.40

GRIFFUS 2.5
P.41

TORO
P.42

TAIPAN
P.43

TERRAINS	GRIFFUS 2.4 P.40	GRIFFUS 2.5 P.41	TORO P.42	TAIPAN P.43
DRY TERRAIN	●	●	○	○
MIXED	●	●	●	●
ROCKY	●	●	○	●
WET	○	○	●	○
MUDDY	○	○	●	○

MTB

NEW	MADE IN FRANCE	PRODUCT NAME	USE	DIMENSIONS	ETRTO	TECHNOLOGY	FB / WB	REINFORCEMENT	COMPOUND	COLOR	TPI	WEIGHT (G) +/- 7%	ITEM CODE	PAGE
	FR	SKELETON RLAB	XC	29 x 2,15	53-622	Tubeless Ready	FB	Hardskin	RR XC	Black	66	680	PV529292	32
	FR	SKELETON RLAB	XC / TRAIL	29 x 2,30	55-622	Tubeless Ready	FB	Hardskin	RR XC	Black	66	690	PV529302	32
		SKELETON	XC	29 x 2,15	53-622	Tubeless Ready	FB	-	Mono-compound	Black	127	580	PV702242	32
		KRAKEN	XC / TRAIL	27,5 x 2,30	55-589	Tubetype	WB	-	Mono-compound	Black	33	1020	PV703895	33
		KRAKEN	XC / TRAIL	27,5 x 2,30	55-589	Tubeless Ready	FB	Reinforced	Bi-compound	Black	66	730	PV703632	33
NEW		KRAKEN	TRAIL / DOWN-COUNTRY	27,5 x 2,40	57-584	Tubeless Ready	FB	Sideskin	Bi-compound	Black	66	N.C	PV704702	33
	FR	KRAKEN RLAB	XC / TRAIL	29 x 2,30	55-622	Tubeless Ready	FB	-	RR XC	Black	127	700	PV529312	33
	FR	KRAKEN RLAB	XC / TRAIL	29 x 2,30	55-622	Tubeless Ready	FB	Hardskin	RR XC	Black	66	800	PV529322	33
	FR	KRAKEN RLAB	XC / TRAIL	29 x 2,30	55-622	Tubeless Ready	FB	Hardskin	RR XC	Tan Sidewalls	66	800	PV529332	33
NEW	FR	KRAKEN RLAB	TRAIL / DOWN-COUNTRY	29 x 2,40	57-622	Tubeless Ready	FB	Hardskin	RR XC	Black	66	N.C	PV531762	33
NEW	FR	KRAKEN RLAB	TRAIL / DOWN-COUNTRY	29 x 2,40	57-622	Tubeless Ready	FB	Hardskin	RR XC	Tan Sidewalls	66	N.C	PV531772	33
NEW		KRAKEN	TRAIL / DOWN-COUNTRY	29 x 2,40	57-622	Tubeless Ready	FB	Sideskin	Bi-compound	Black	66	N.C	PV704692	33
		KRAKEN	XC / TRAIL	29 x 2,30	55-622	Tubetype	WB	-	Mono-compound	Black	33	1060	PV703805	33
		KRAKEN	XC / TRAIL	29 x 2,30	55-622	Tubeless Ready	FB	Sideskin	Bi-compound	Black	66	800	PV703002	33

MTB

NEW	MADE IN FRANCE	PRODUCT NAME	USE	DIMENSIONS	ETRTO	TECHNOLOGY	FB / WB	REINFORCEMENT	COMPOUND	COLOR	TPI	WEIGHT (G) +/- 7%	ITEM CODE	PAGE
		PYTHON 2	XC / TRAIL	26 x 2,25	54-559	Tubeless Ready	FB	Sideskin	Bi-compound	Black	66	700	PV704112	34
NEW		PYTHON 2	XC	26 x 2,10	52-559	Tubetype	FB	Sideskin	Mono-compound	Black	66	750	PV704342	34
		PYTHON 2	XC	26 x 2,10	52-559	Tubetype	WB	-	Mono-compound	Black	33	695	PV700865	34
	FR	PYTHON 2	XC	26 x 2,10	52-559	Tubeless Ready	FB	-	RR XC	Black	127	660	PV525182	34
		PYTHON 2	XC / TRAIL	26 x 2,25	54-559	Tubetype	WB	-	Mono-compound	Black	33	680	PV700885	34
		PYTHON 2	XC / TRAIL	26 x 2,25	54-559	Tubetype	FB	Hardskin	Mono-compound	Black	66	610	PV700892	34
		PYTHON 2	XC	27.5 x 2,10	52-584	Tubetype	WB	-	Mono-compound	Black	33	720	PV701285	34
		PYTHON 2	XC	27.5 x 2,10	52-584	Tubetype	FB	Hardskin	Mono-compound	Black	66	690	PV700912	34
		PYTHON 2	XC / TRAIL	27.5 x 2,30	55-584	Tubeless Ready	FB	Sideskin	Bi-compound	Black	66	750	PV704102	34
	FR	PYTHON 2	XC / TRAIL	27.5 x 2,25	54-584	Tubeless Ready	FB	Hardskin	RR XC	Black	66	815	PV526362	34
		PYTHON 2	XC	29 x 2,10	52-622	Tubetype	WB	-	Mono-compound	Black	33	770	PV700945	34
		PYTHON 2	XC	29 x 2,10	52-622	Tubetype	FB	Hardskin	Mono-compound	Black	66	740	PV700952	34
	FR	PYTHON 2	XC	29 x 2,10	52-622	Tubeless Ready	FB	Hardskin	RR XC	Black	66	830	PV525222	34
	FR	PYTHON 2	XC / TRAIL	29 x 2,25	54-622	Tubeless Ready	FB	-	RR XC	Black	127	760	PV525352	34
		PYTHON 2	XC / TRAIL	29 x 2,30	55-622	Tubeless Ready	FB	Sideskin	Bi-compound	Black	66	780	PV704192	34
NEW		PYTHON 2	XC / TRAIL	29 x 2,30	55-622	Tubetype	FB	Sideskin	Mono-compound	Black	66	835	PV704362	34
NEW		PYTHON 2	XC / TRAIL	29 x 2,30	55-622	Tubetype	WB	-	Mono-compound	Black	33	900	PV704355	34
	FR	PYTHON 2	XC / TRAIL	29 x 2,25	54-622	Tubeless Ready	FB	Hardskin	RR XC	Black	66	860	PV526372	34
		TAIPAN	XC	26 x 2,10	52-559	Tubeless Ready	FB	-	Mono-compound	Black	127	600	PV702702	35
		TAIPAN	XC	27.5 x 2,10	52-584	Tubetype	FB	Hardskin	Mono-compound	Black	66	690	PV701022	35
		TAIPAN	XC	27.5 x 2,10	52-584	Tubeless Ready	FB	-	Mono-compound	Black	127	620	PV702712	35
		TAIPAN	XC / TRAIL	27.5 x 2,25	54-584	Tubetype	WB	-	Mono-compound	Black	33	710	PV701035	35
NEW		TAIPAN	XC / TRAIL	27.5 x 2,30	55-622	Tubeless Ready	FB	Sideskin	Bi-compound	Black	66	760	PV704032	35

MTB

NEW	MADE IN FRANCE	PRODUCT NAME	USE	DIMENSIONS	ETRTO	TECHNOLOGY	FB / WB	REINFORCEMENT	COMPOUND	COLOR	TPI	WEIGHT (G) +/-7%	ITEM CODE	PAGE
		TAIPAN	XC	29 x 2,10	52-622	Tubeless Ready	FB	Hardskin	Mono-compound	Black	66	740	PV701062	35
	FR	TAIPAN	XC	29 x 2,10	52-622	Tubeless Ready	FB	-	RR XC	Black	127	608	PV524882	35
	FR	TAIPAN	XC	29 x 2,10	52-622	Tubeless Ready	FB	Hardskin	RR XC	Black	66	697	PV524892	35
		TAIPAN	XC	29 x 2,10	52-622	Tubeless Ready	FB	-	Mono-compound	Black	127	715	PV702722	35
	FR	TAIPAN	XC / TRAIL	29 x 2,25	54-622	Tubeless Ready	FB	-	RR XC	Black	127	685	PV525432	35
	FR	TAIPAN	XC / TRAIL	29 x 2,25	54-622	Tubeless Ready	FB	Hardskin	RR XC	Black	66	770	PV526532	35
NEW		TAIPAN	XC / TRAIL	29 x 2,30	55-622	Tubeless Ready	FB	Sideskin	Bi-compound	Black	66	830	PV704022	35
	FR	TAIPAN	ENDURO	29 x 2,35	57-622	Tubeless Ready	FB	Hardskin	RR Gravity	Black	66	870	PV526452	43
NEW		TAIPAN	TRAIL / DOWN-COUNTRY	29 x 2,40	57-622	Tubeless Ready	FB	Sideskin	Bi-compound	Black	66	880	PV704002	35
		TORO	Recreational	24 x 2,00	50-507	Tubeless Ready	WB	Hardskin	Mono-compound	Black	33	560	PV702695	37
		TORO	XC	26 x 2,15	51-559	Tubeless Ready	WB	-	Mono-compound	Black	66	625	PV697925	37
		TORO	XC	26 x 2,15	51-559	Tubeless Ready	FB	Hardskin	Mono-compound	Black	66	620	PV701092	37
		TORO	XC / TRAIL	26 x 2,25	54-559	Tubeless Ready	FB	-	Mono-compound	Black	66	655	PV700722	37
		TORO	XC	27.5 x 2,10	52-584	Tubeless Ready	WB	-	Mono-compound	Black	33	740	PV701145	37
		TORO	XC	27.5 x 2,10	52-584	Tubeless Ready	FB	Hardskin	Mono-compound	Black	66	710	PV701152	37
		TORO	XC / TRAIL	27.5 x 2,25	54-584	Tubeless Ready	FB	-	Mono-compound	Black	66	700	PV700762	37
		TORO	XC / TRAIL	27.5 x 2,25	54-584	Tubeless Ready	FB	-	Mono-compound	Black	127	805	PV702842	37
		TORO	ENDURO	27.5 x 2,35	57-584	Tubeless Ready	FB	-	Mono-compound	Black	127	950	PV702862	42
	FR	TORO	XC	29 x 2,10	52-622	Tubeless Ready	FB	-	RR XC	Black	127	680	PV526182	37
	FR	TORO	XC	29 x 2,10	52-622	Tubeless Ready	FB	Hardskin	RR XC	Black	66	705	PV526192	37
		TORO	XC	29 x 2,10	52-622	Tubeless Ready	WB	-	Mono-compound	Black	33	770	PV700025	37
	FR	TORO	XC / TRAIL	29 x 2,25	54-622	Tubeless Ready	FB	Hardskin	RR XC	Black	66	900	PV526502	37
		TORO	XC / TRAIL	29 x 2,30	55-622	Tubeless Ready	FB	Sideskin	Bi-compound	Black	66	800	PV704042	37
	FR	TORO	ENDURO / E-BIKE	29 x 2,35	57-622	Tubeless Ready	FB	Hardskin	RR Gravity	Black	66	1000	PV528542	42
		TORO	TRAIL / DOWN-COUNTRY	29 x 2,40	57-622	Tubeless Ready	FB	Sideskin	Bi-compound	Black	66	990	PV704012	37
		GLA	XC	26 x 2,10	52-559	Tubeless Ready	FB	-	Mono-compound	Black	127	620	PV701322	36

MTB

NEW	MADE IN FRANCE	PRODUCT NAME	USE	DIMENSIONS	ETRTO	TECHNOLOGY	FB / WB	REINFORCEMENT	COMPOUND	COLOR	TPI	WEIGHT (G) +/- 7%	ITEM CODE	PAGE
		GILA	XC	27.5 x 2,10	52-584	Tubeless Ready	FB	-	Mono-compound	Black	127	715	PV701782	36
		GILA	XC / TRAIL	27.5 x 2,25	54-584	Tubeless Ready	FB	-	Mono-compound	Black	127	770	PV701342	36
NEW		GILA	XC / TRAIL	27,5 x 2,30	55-584	Tubeless Ready	FB	Sideskin	Bi-compound	Black	66	N.C	PV704732	36
		GILA	XC	29 x 2,10	52-622	Tubeless Ready	FB	-	Mono-compound	Black	127	660	PV701352	36
		GILA	XC / TRAIL	29 x 2,25	54-622	Tubeless Ready	FB	-	Mono-compound	Black	127	690	PV701792	36
NEW		GILA	TRAIL / DOWN-COUNTRY	29 x 2,40	57-622	Tubeless Ready	FB	Sideskin	Bi-compound	Black	66	N.C	PV704712	36
NEW		GILA	XC / TRAIL	29 x 2,30	55-622	Tubeless Ready	FB	Sideskin	Bi-compound	Black	66	N.C	PV704722	36
		GRIFFUS	ENDURO / E-BIKE	27.5 x 2,40	57-584	Tubetype	WB	-	Mono-compound	Black	33	1160	PV702635	40
		GRIFFUS	ENDURO / E-BIKE	27.5 x 2,50	58-584	Tubetype	WB	-	Mono-compound	Black	33	1200	PV702655	41
		GRIFFUS	ENDURO / E-BIKE	27.5 x 2,40	57-584	Tubeless Ready	FB	Sideskin	Bi-compound	Black	66	920	PV702642	40
		GRIFFUS	ENDURO / E-BIKE	27.5 x 2,50	58-584	Tubeless Ready	FB	Sideskin	Bi-compound	Black	66	980	PV702662	41
	FR	GRIFFUS RLAB	ENDURO / E-BIKE	27.5 x 2,40	57-584	Tubeless Ready	FB	Hardskin	RR Gravity	Black	66	930	PV528742	40
	FR	GRIFFUS RLAB	ENDURO / E-BIKE	27.5 x 2,50	58-584	Tubeless Ready	FB	Hardskin	RR Gravity	Black	66	980	PV528752	41
	FR	GRIFFUS RLAB	ENDURO / E-BIKE	27.5 x 2,40	57-584	Tubeless Ready	FB	Hardskin	RR Gravity	Tan	66	930	PV529112	40
	FR	GRIFFUS RLAB	ENDURO / E-BIKE	27.5 x 2,50	58-584	Tubeless Ready	FB	Hardskin	RR Gravity	Tan	66	980	PV529122	41
NEW		GRIFFUS	ENDURO / E-BIKE	29 x 2,40	57-622	Tubetype	WB	-	Mono-compound	Black	33	N.C	PV704675	40
NEW		GRIFFUS	ENDURO / E-BIKE	29 x 2,50	58-622	Tubetype	WB	-	Mono-compound	Black	33	N.C	PV704685	41
		GRIFFUS	ENDURO / E-BIKE	29 x 2,40	57-622	Tubeless Ready	FB	Sideskin	Bi-compound	Black	66	1020	PV702672	40
		GRIFFUS	ENDURO / E-BIKE	29 x 2,50	58-622	Tubeless Ready	FB	Sideskin	Bi-compound	Black	66	1120	PV702682	41
	FR	GRIFFUS RLAB	ENDURO / E-BIKE	29 x 2,40	57-622	Tubeless Ready	FB	Hardskin	RR Gravity	Black	66	1030	PV528732	40
	FR	GRIFFUS RLAB	ENDURO / E-BIKE	29 x 2,40	57-622	Tubeless Ready	FB	Hardskin	RR Gravity	Tan	66	1030	PV529692	40
	FR	GRIFFUS RLAB	ENDURO / E-BIKE	29 x 2,50	58-622	Tubeless Ready	FB	Hardskin	RR Gravity	Black	66	1100	PV528722	41
	FR	GRIFFUS RLAB	ENDURO / E-BIKE	29 x 2,50	58-622	Tubeless Ready	FB	Hardskin	RR Gravity	Tan	66	1100	PV529702	41
	FR	GRIFFUS RLAB 2x66	ENDURO / E-BIKE	27.5 x 2,40	57-584	Tubeless Ready	FB	-	RR Gravity	Noir	2x66	1030	PV529812	40
	FR	GRIFFUS RLAB 2x66	ENDURO / E-BIKE	27.5 x 2,50	58-584	Tubeless Ready	FB	-	RR Gravity	Noir	2x66	1080	PV529792	41
	FR	GRIFFUS RLAB 2x66	ENDURO / E-BIKE	29 x 2,40	57-622	Tubeless Ready	FB	-	RR Gravity	Noir	2x66	1130	PV529822	40
	FR	GRIFFUS RLAB 2x66	ENDURO / E-BIKE	29 x 2,50	58-622	Tubeless Ready	FB	-	RR Gravity	Noir	2x66	1180	PV529802	41