

# CHALLENGER



 | HUTCHINSON®



It's easy to be average.  
To do the bare minimum. To get by.  
Life overtakes you as you stay in your lane.  
But excellence takes commitment.  
Perseverance.  
Time and miles.

A small step, a jump into a team. To seek camaraderie. To find strength in unity. Others on the same path, seeking the same. But to run with the pack, you first have to find your own feet. To go it alone.  
**To ride your own story.**

The moment of realization. The spark that lights the fire that changes it all. I can do this. I will do this. The casting aside of bad habits. A moment of clarity – of all encompassing change.

And then, commitment. Pain. Passion. Discipline, a renewed sense of values. To fail, to succeed. But always onwards.

The freedom of the open roads. Momentum – always forward, never backwards. Pain melts into enjoyment. Into familiarity. The hot tarmac, the burning legs. Beads of sweat drip into the final push. The peak. The sheer euphoria of a goal achieved. Hard work put in. Results. Because the best things in life are earned.

# Hutchinson Challenger : A Sneak Peek into our Marketing Approach





PERFORMANCE  
ADDICTS

GRAN FONDO  
JOURNEYS

INTENSIVE YEARLY  
TRAINING

TROUBLE-FREE CYCLOSPORT

LEISURE/BEGUINERS

ROAD  
RANGE



INTENSIVE<sup>2</sup>  
SECTOR  
EQUINOX<sup>2</sup>

CHALLENGER



# CHALLENGER

PV530891	700 X 25	HARDSHIELD	TUBELESS
PV530901	700 x 28	HARDSHIELD	TUBELESS
PV530911	700 X 32	HARDSHIELD	TUBELESS
<hr/>			
PV703911	700 x 25	REINFORCED	TUBETYPE
PV703921	700 x 28	REINFORCED	TUBETYPE
PV704201	700 x 28	REINFORCED	TUBETYPE TAN
PV704051	700 x 30	REINFORCED	TUBETYPE



# UNIQUE ADVANTAGES

## WHAT MAKES THE CHALLENGER TUBELESS STAND OUT

**COMFORT**

**DURABILITY**  
→ 10,000km

**AIRTIGHT**

**OPTION FOR  
NO SEALANT**

**GOOD VALUE  
FOR MONEY**

**BROAD SCOPE OF USE**

**MADE IN FRANCE**





# VERSATILE APPLICATION FOR DIVERSE CYCLISTS



## ALL-SEASON RELIABILITY

Ideal for new cyclists seeking a dependable all-season tyre that ensures a smooth and safe ride in varying conditions.



## WINTER TRAINING CONFIDENCE

A trusted choice for experienced riders in search of a reliable winter and training tyre, offering peace of mind during rigorous training sessions.

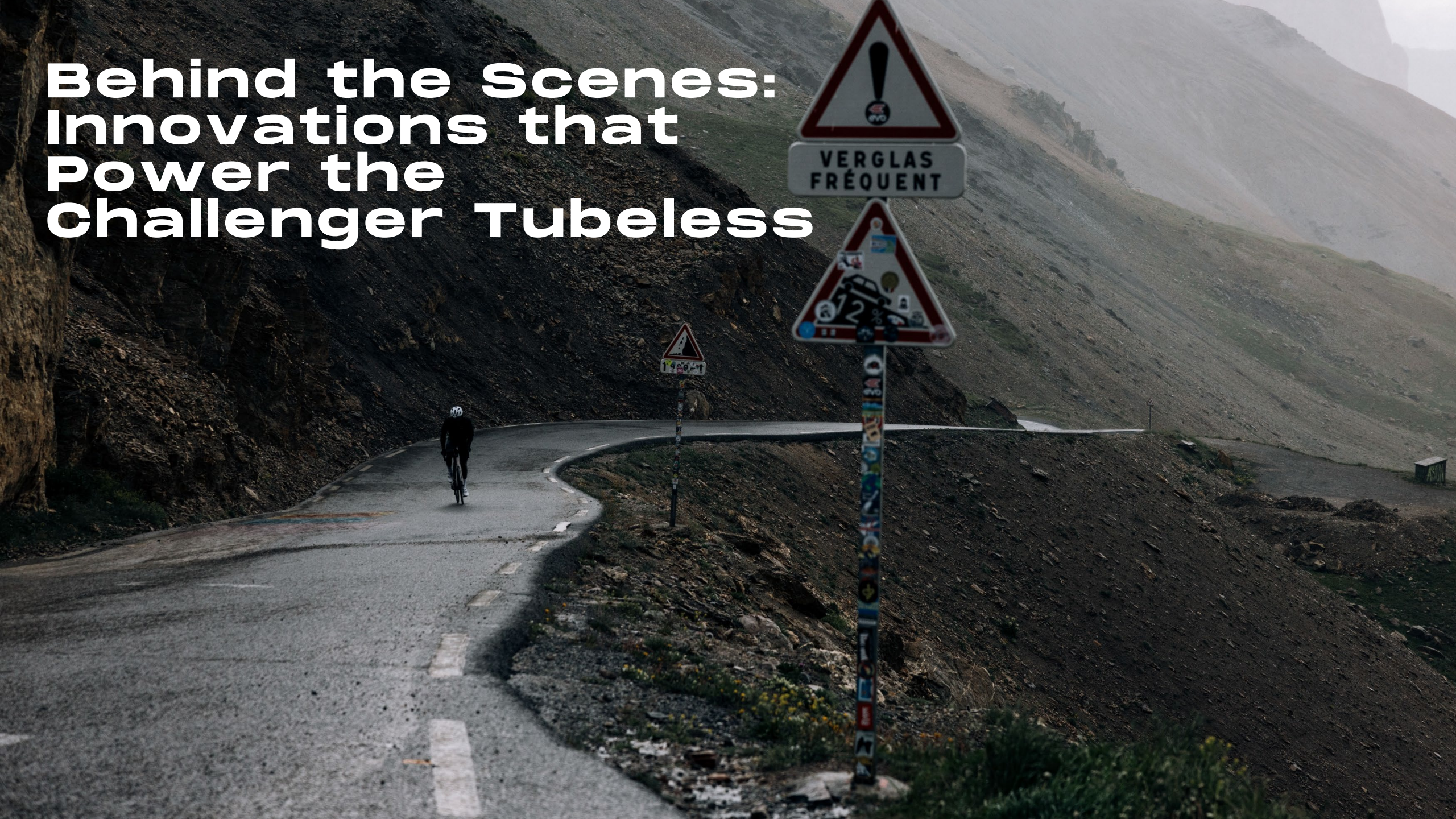


## ENDURANCE EXCELLENCE

Tailored for ultra-endurance cyclists and athletes participating in long-distance races and adventures, providing robust tyre support for challenging conditions and demanding journeys.



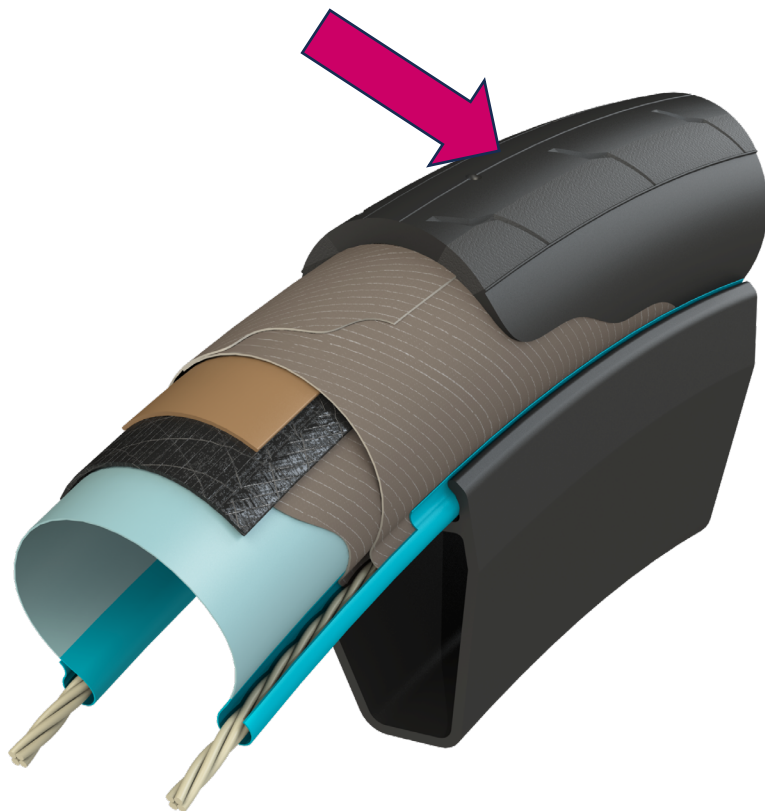
# Behind the Scenes: Innovations that Power the Challenger Tubeless





# 10 000 KM : HOW IS IT POSSIBLE?

## THE TREAD



### Design :

Slick on the middle  
For the Rolling Resistance  
Cut on the side for the grip

### Material :

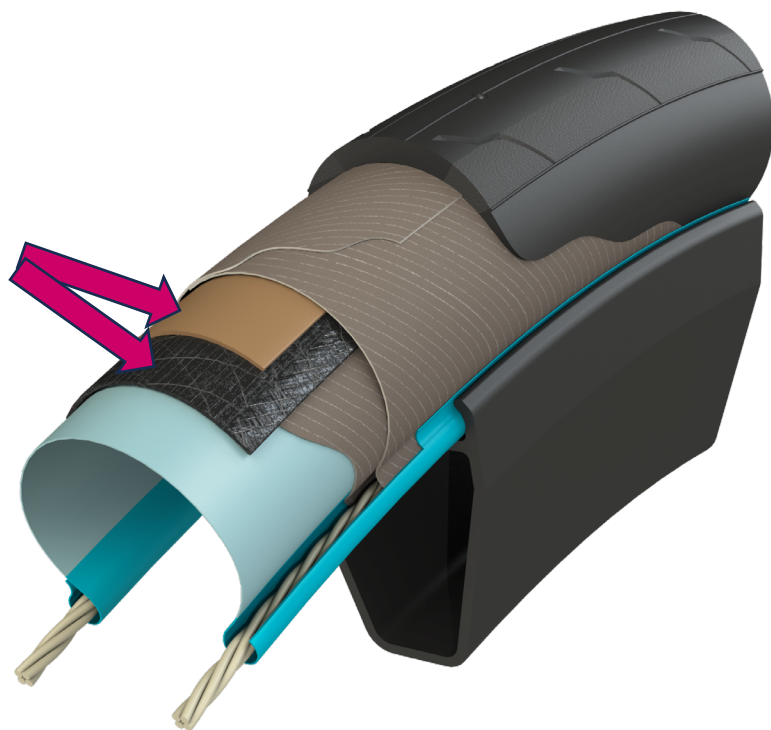
Bi-compound  
Hard on the middle to mix  
Rolling Resistance and wear  
Flexible on the side for the grip

### Thickness :

X2 compare to other road tire



# 10 000 KM : HOW IS IT POSSIBLE? **HARDSHIELD TECHNOLOGY**



## **NEW on Hutchinson Tyre**

2 Reinforcement layers

Polyamide + Aramid material

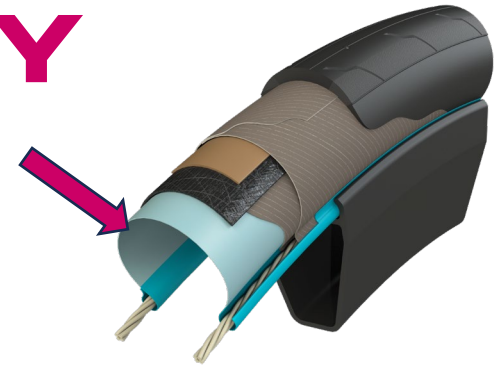
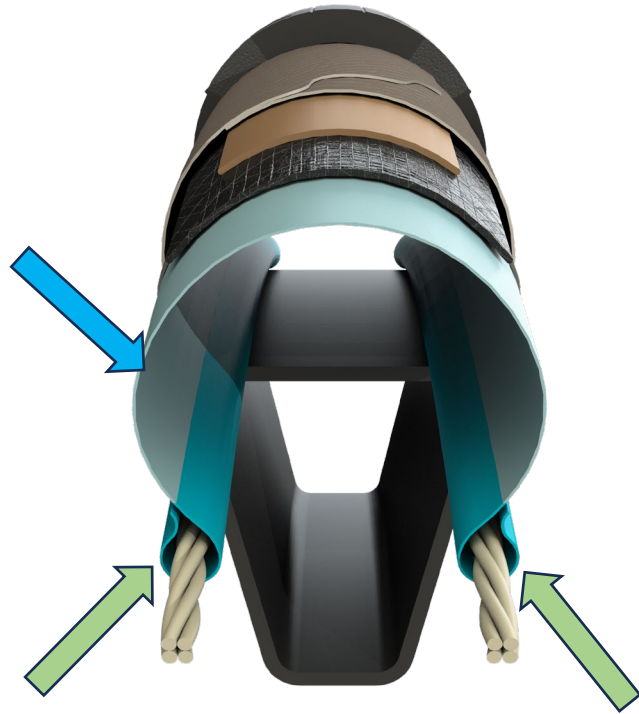
**Puncture resistance :**

170N

Note : Standard Puncture resistance  
80N



# 10 000 KM : HOW IS IT POSSIBLE? **AIRSHIELD TECHNOLOGY**



## **Update of Hutchinson innovation from 2000s**

Bi compound Material

1. Under the casing  
Compound with butyl for the airtight
2. Stiff Compound around the bead  
For the abrasion with the bead

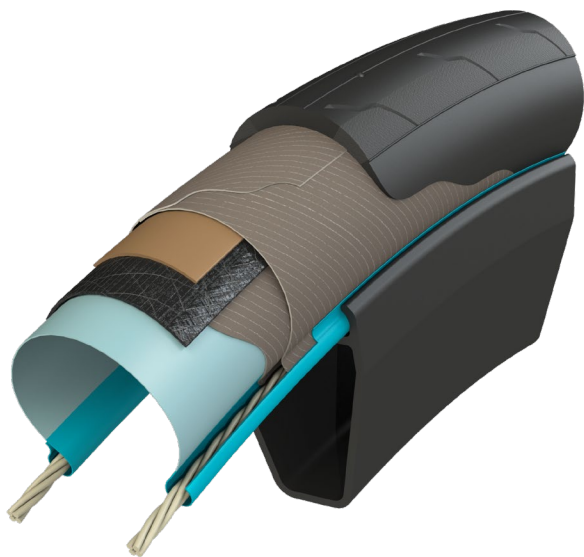


# CHALLENGER TUBELESS PRESSURE AND SEALANT

**700 x 25**

**Recommended pressure : 6.5 bar  
/94 PSI**

**Maximum pressure : 7 bar / 101 PSI**



**700x28**

**Recommended pressure : 6 bar /87  
PSI**

**Maximum pressure : 6.5 bar /94  
PSI**

**700x32**

**Recommended pressure : 5 bar /72  
PSI**

**Maximum pressure : 5.5 bar /79 PSI**



**Note : Sealant Use only for Puncture resistance  
Not useful for airtight**



# Triumph in Trials: Tester Reactions to Challenger Tubeless



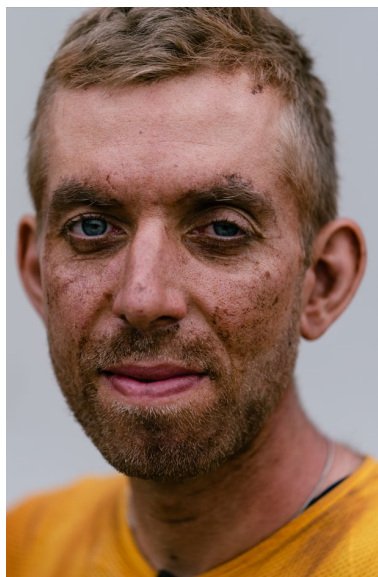


# PERFORMANCE ASSURANCE: WHAT OUR TESTERS SAY



“ Thanks to you, I had a fantastic summer cycling with well-fitted Challenger tyres. It's simply astounding. After several hundred kilometers, there isn't a single visible mark on the rubber, and the tubeless is absolutely airtight with no pressure loss! It has truly convinced me of the benefits of this technology, especially as a cautious road cyclist who had some doubts! ”

THOMAS CAUSSE – Road Cycling journalist



“ Using the Challenger Tubeless 32mm brings it all together: a maximum in comfort and performance while still being reliable on all kinds of terrain. I am using it for all kinds of terrain – tarmac, roads with pretty bad surface or gravel. During the Transcontinental I was able to ride one pair of tires through the whole race – without any puncture. And still – after 4.500km those tires are still up for more. The Challenger Tubeless is an exceptional piece of technology that never let me down. ”

ULRICH BARTHOLMOES – Ultra Endurance Athlete, 19 ultra distance race since 2019, 15 victories





# PERFORMANCE ASSURANCE: WHAT OUR TESTERS SAY



“ I used the Challenger tubeless tyre on my most recent ultra race from Brittany to Wales. The 2000km set route ultra was meant to be road but like most ultras I’ve undertaken, you end up on more gravel than you expect. Whilst many riders suffered from several punctures on these stretches, I had no such issues and getting to the finish without having to plug any holes. The tyres provided the loaded bike with plenty of grip giving me confidence on wet, loose and pot holed descents. ”

JOSH REID – Adventure Cyclist – China to UK Youtube video +3.6M views



“ I have tested them in almost every possible situation, summer (45°C), rainy days.... I have climbed, Tourmalet, Solour, Aubisque even the asphalt and the dirty gravel of Tromouse. The data is simple, in all these kilometers I have punctured a whopping zero times, yes zero times on both wheels. The front tyre is now with 5.800km and seems to be still at 60% of use, so I decide to continue using it until it is at its maximum. My assessment is clear, I would definitely recommend them and I would mount them again. ”

IBAI FRADEJAS – Ultra Endurance athlete & adventurer





CODE	GENCOD	PRODUCT	DIMENSIONS	ETRTO	TECHNOLOGY	REINFORCEMENT	COMPOUND	COLOR	TPI	RP PRICE
PV530891	3248382087159	CHALLENGER	700 x 25	25-622	Tubeless Ready	Hardshield	Bi-compound	Black	127	59,99 €
PV530901	3248382087173	CHALLENGER	700 x 28	28-622	Tubeless Ready	Hardshield	Bi-compound	Black	127	59,99 €
PV530911	3248382087197	CHALLENGER	700 x 32	32-622	Tubeless Ready	Hardshield	Bi-compound	Black	127	59,99 €